

Cruz Remote Edge Management - Nutanix

Managing the Remote Edge with Nutanix/HCI Edge Compute – at scale

BENEFITS

Minimize onsite technical support costs

Holistic visibility to edge health from bare metal through virtual functions

Consistent compliance to security and configuration policies across all edge solution sites

Remotely manage software updates and dependencies for complete edge stack

Manage updates for groups of edge sites

Automate recurring operations and as closed-loop error remedies

Consolidated visibility and processing of event, log and telemetry.

Coordinate centralized interactions such as SDWAN orchestrators or cloud-based applications

REMOTE EDGE CHALLENGES

The edge facilitates a wide range of important business opportunities. From delivering better internet services for hundreds of restaurants to providing service providers with distributed 5G processing, edge infrastructure has become the core for many diverse and promising business models. Edge solutions require integration into a wide range of software components to support comprehensive and holistic management of hardware and software, both for individual sites and across distributed edge deployments – at scale. The integrated use of numerous new IT and network technologies – such as Virtual Edge Platforms (VEP), SDWAN, and HCI-based cloud clusters – coupled with broad geographical sites and limited technical expertise, presents a number of management challenges for edge business models.

Sample Edge Use Cases:

- Branch Office
- Network Edge
- Campus
- Isolated Site
- CDN/Video
- TV/Sport
- IoT
- Security

DORADO STRATEGY

Dorado is committed to giving customers technology choices to match their technical requirements, regulator mandates and financial models. For instance, utilizing Nutanix industry proven hyper-converged Infrastructure (HCI) offers distinct functional advantages in remote and distributed environments, particularly when coupled with complimentary edge capabilities such as the VEP and industry leading SDWAN solutions. Dorado offers unified management for Nutanix HCI edge computing with integrated support for advanced edge capabilities from varied vendors.

NUTANIX HCI – PROVEN DISTRIBUTED CLOUD CLUSTER PLATFORM

The Nutanix HCI platform is a leader in providing enterprise-grade distributed cloud capabilities, making it a clear choice to support use cases in the expanding edge market.

Key Nutanix Features

- HCI
- Cluster Health Management (Prism)
- Hybrid Cloud Support
- Storage Management (AOS/CVM)
- Virtual Function Manager (AHV, ESXi, Hyper-V)
- Graphic enhancements
- Lifecycle support
- Data protection
- Security

CRUZOC REMOTE EDGE MANAGEMENT SOLUTION – AT SCALE

Dorado Software's Cruz Operations Center (CruzOC) is a unified Enterprise IT management system to view, monitor, deploy, and configure your remote edge management infrastructure to maximize performance, reduce office/store visits, eliminate unplanned truck rolls, and eliminate outages.

The CruzOC Remote Edge Management Solution offers a single pane-of-glass for comprehensive security, compliance, health, performance, and software lifecycle orchestration for any infrastructure in your remote edge software-defined infrastructure and legacy hardware. Specifically, CruzOC integrates to Nutanix key features – Prism, AHV, rSyslog, and AOS – for monitoring, orchestration, and lifecycle and configuration management to support remote control of the Nutanix cluster while providing integrated management for other edge site capabilities.

In a single solution, IT managers can view and manage diverse environments of multiple technologies – physical/virtual/compute/network – from multiple vendors.

With CruzOC, IT departments can simplify the deployment and management headaches with a single tool to obtain performance statistics; monitor health; backup/restore/deploy firmware; push and monitor configurations to wireless controllers, APs, and network switches; trigger network health alerts; automate repetitive tasks; simplify troubleshooting; and ensure service availability.

SOLUTION HIGHLIGHTS

CruzOC provides critical features that address remote edge management challenges, across any potential edge assets, while optimizing support costs, reducing downtime, eliminating manual errors, and minimizing onsite visits.

Single Pane-of-Glass: Manage diverse managed resources through their full lifecycle via a single interface.

Consolidate Resource Management: Centralized visibility of all edge computing, networking, and application performance metrics, events, and traffic flow.

Asset Management: Manage edge installations as an associated group of resources for holistic performance and root cause visibility

- Corporate-wide edge visibility & management
- Simple edge site navigation
- Context filtering and asset association for simple identification of effected resources.
- Deep visibility to underlying infrastructure metrics (BMC/iDrac/Redfish, Network)
- Automated Prism pass-through
- Manages Nutanix REST, nCLI, Powershell APIs

Active Security Compliance: Validate resource configurations, change auditing and automated compliance enforcement for security politics.

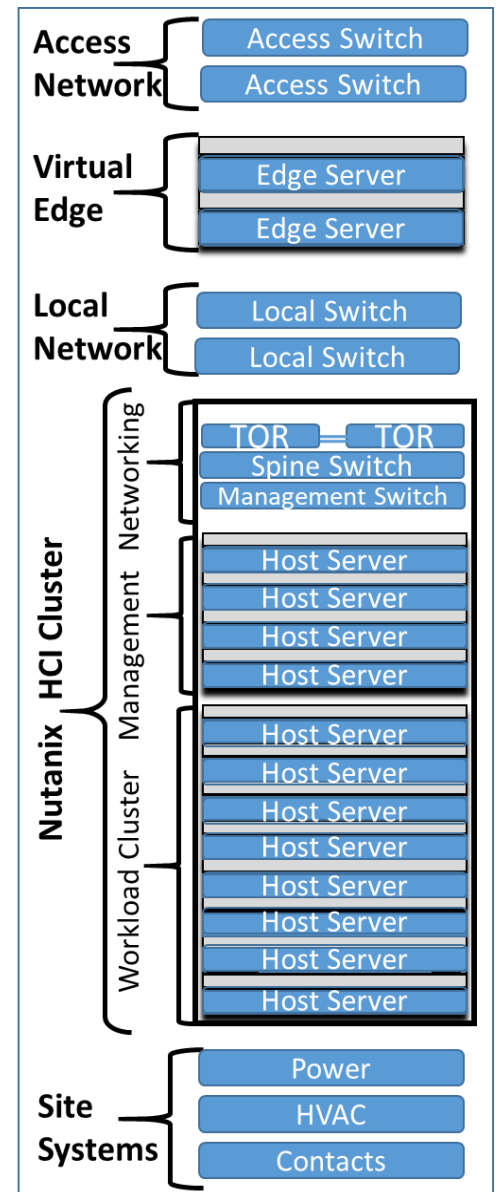
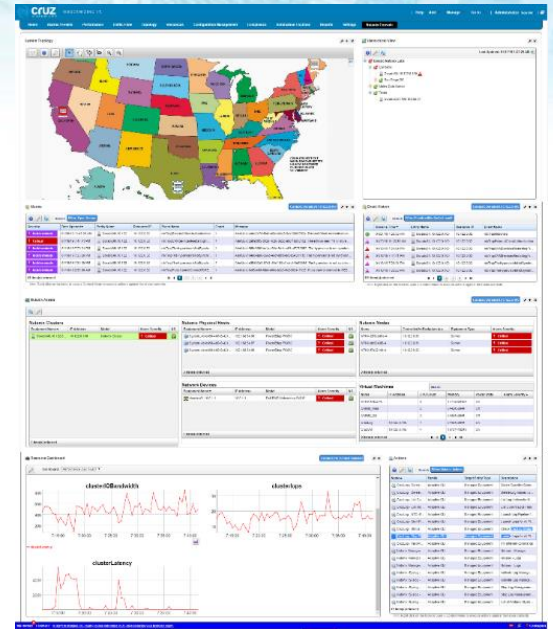
Software Lifecycle Management: Corporate-wide application of software updates to network devices with dependency validation for network functions, computer processes and applications.

No-touch Office Deployment: Accelerate office rollout with technician free automated resource and network configuration.

Log & Telemetry Support: Collect, filter, analyze and visualize comprehensive edge metrics via logs and streaming telemetry.

Additional Cruz Remote Edge Support

- Low level HW Component Visibility
- External Function Management
- Environmental Control
- Autonomous Operation
- Access Control
- VNF Orchestration



TECHNICAL SPECIFICATIONS

Managed Software Asset Examples

- Bare Metal (iDrac, Redfish, IPMI)
- BIOS
- Network OS
- Compute OS (AOS, Linux, MS)
- Hypervisor (AHV, KVM, ESXi, HyperV)
- Orchestrators (VCO, Openstack, vCenter)
- VM/Containers
- SDWAN (Velocloud, Silverpeak)
- VNF (Palo Alto, SRX, Cisco)
- Applications

Comprehensive Multi-tech/ Multi-vendor Support

- **Technology Examples:** Networking, Wireless, Storage, SD-WAN, Servers, Hypervisors, Clients, Hyper Converged, Backup
- **Vendor Examples:** Cisco, VMware, Ruckus, Aerohive, Dell EMC, Brocade, Juniper, Microsoft, Netgear, Extreme, Foundry, HPE, F5, Sonicwall, Sonus, Aperi, Avaya, Lenovo, Ericsson, Siemens, Enterasys, Nortel, Alcatel, 3Com and many more.
- **For more details and a complete device listing, contact sales@doradosoftware.com**

Supported Web Browsers

- Chrome
- Safari
- Firefox
- Internet Explorer

Deployment Options

- Supports single server and high availability deployments with MySQL and Oracle databases
- Operating Systems: Microsoft Windows Server, Linux for Redhat and CentOS, Virtual Appliance

Trials, Pricing, Options

- Free 30-day trial
www.doradosoftware.com
- Low-risk, affordable subscription-based options in 1/3/5-year terms
- Scales from 25 devices to unlimited

Demos, Quotes, Purchase

- Dell Technologies Representative, Reseller or sales@doradosoftware.com

About Dorado Software

Dorado Software, Inc. is a leading provider of integrated resource management, performance monitoring, and service orchestration software to automate cloud operations across converged infrastructure fabrics. Dorado helps IT professionals to monitor, configure, and manage converged infrastructures (physical and virtual storage, servers, networking, applications), virtualized network functions and cloud services.
www.doradosoftware.com.

